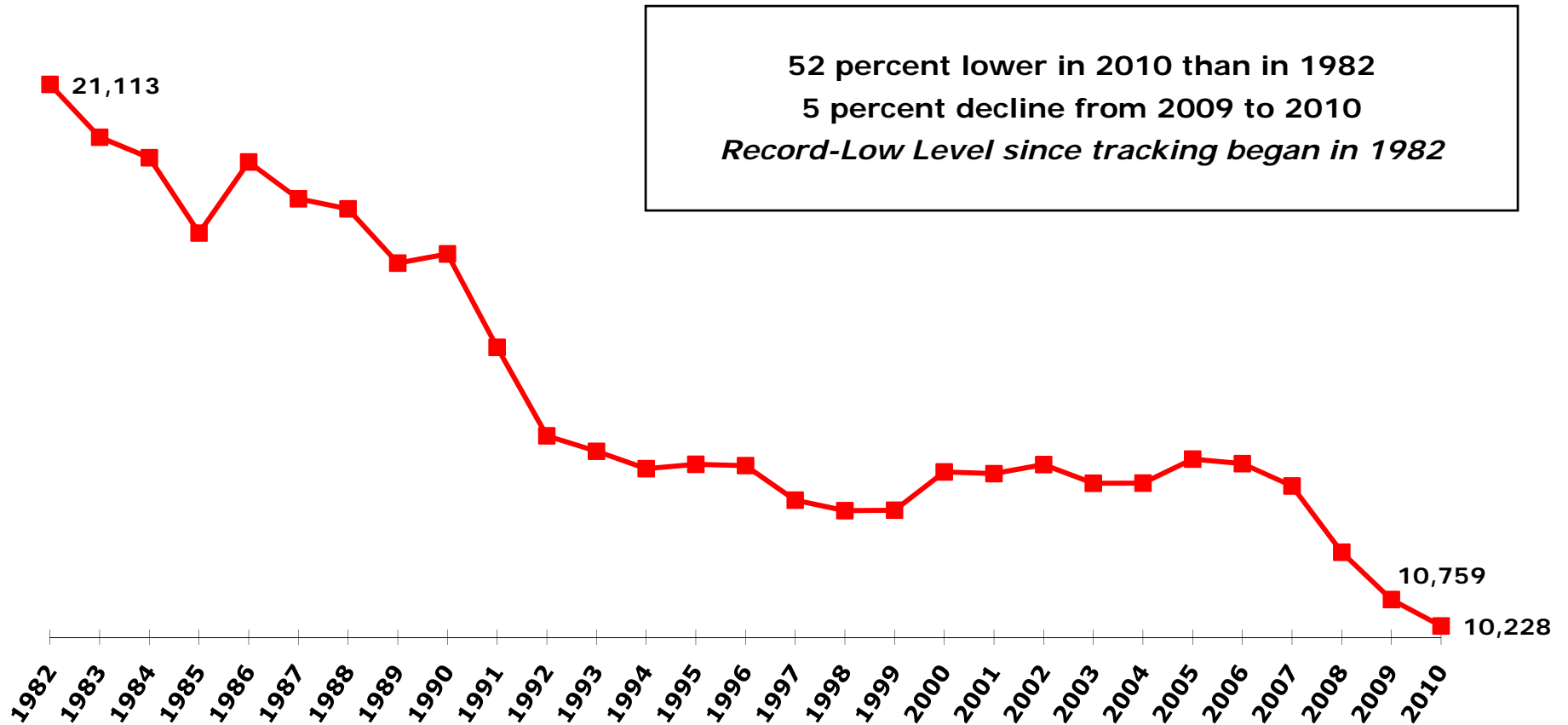
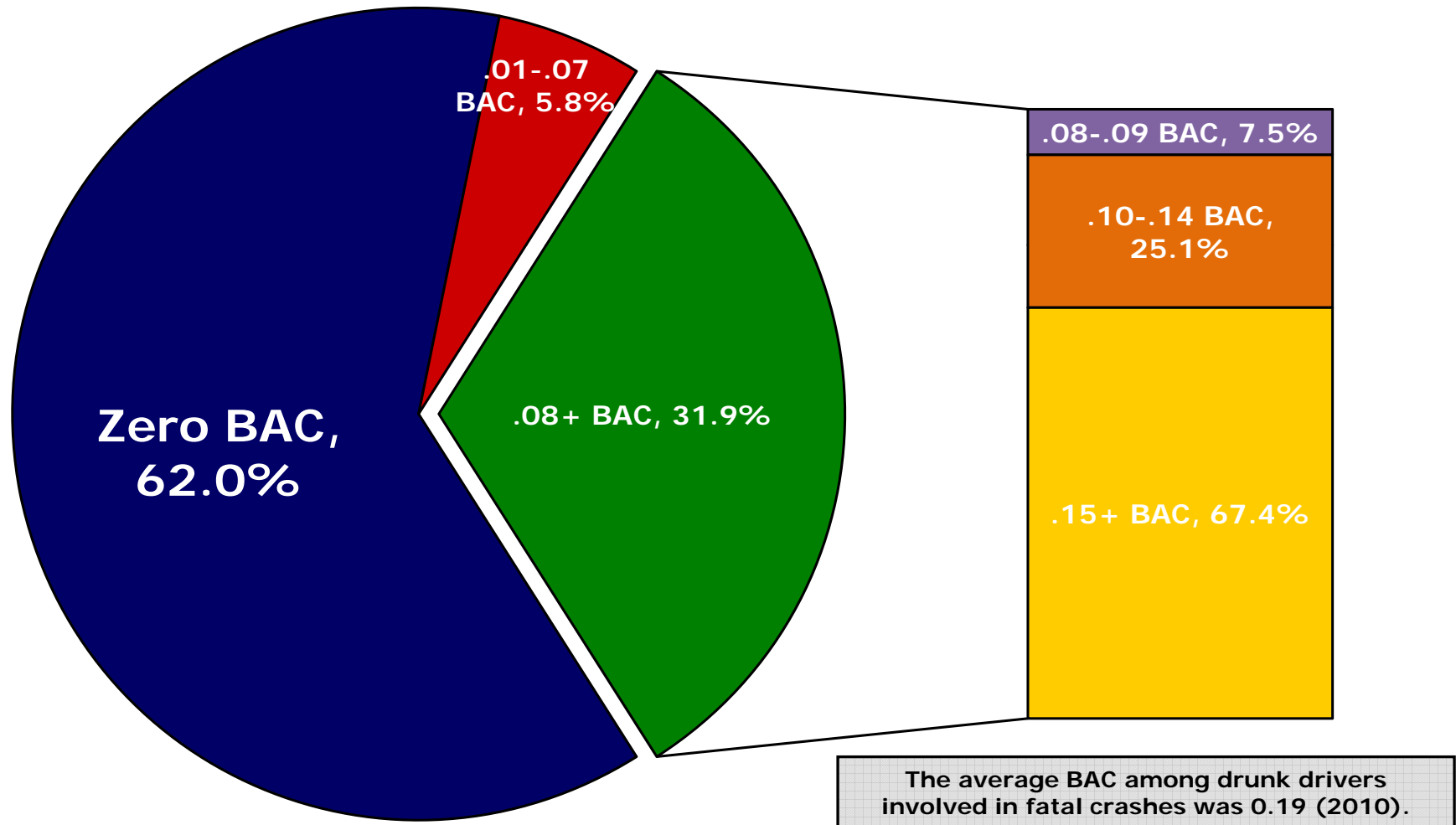


# U.S. Department of Transportation National Highway Traffic Safety Administration Total Fatalities in Drunk-Driving Crashes



Source: National Highway Traffic Safety Administration, U.S. Department of Transportation. Drunk-driving fatalities represent the total number of fatalities (occupants and nonoccupants) in motor vehicle traffic crashes involving a driver or motorcycle rider with a blood alcohol concentration of .08 or higher. <http://www-nrd.nhtsa.dot.gov/Pubs/811552.pdf>

**U.S. Department of Transportation**  
National Highway Traffic Safety Administration  
2010 Fatalities in Motor Vehicle Traffic Crashes by Driver BAC

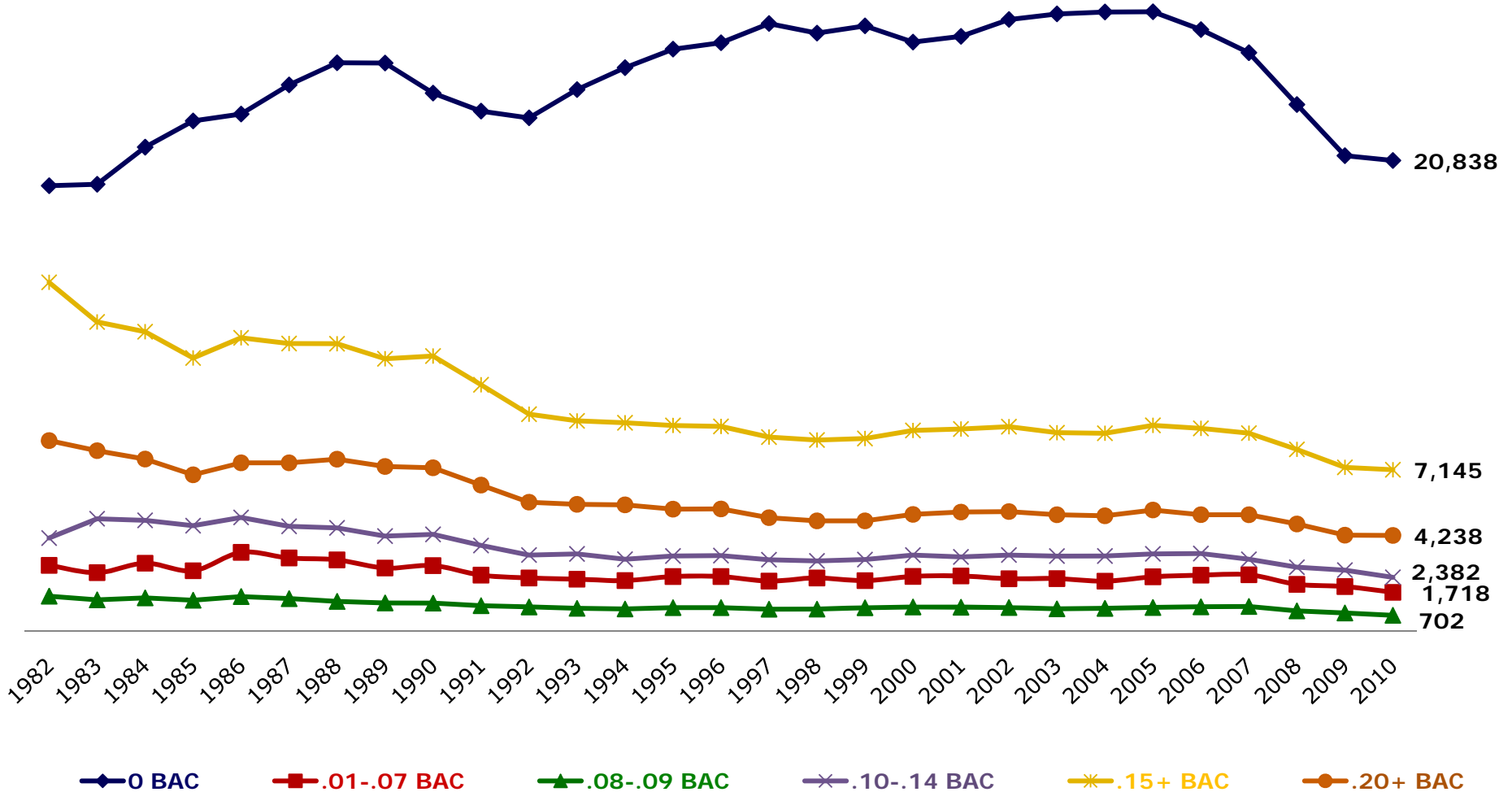


Source: National Highway Traffic Safety Administration, U.S. Department of Transportation. Fatalities in motor vehicle traffic crashes by the highest driver BAC in the crash, 2010 Fatal Analysis Reporting System (FARS).

# U.S. Department of Transportation

## National Highway Traffic Safety Administration

### 1982-2010 Fatalities in Motor Vehicle Traffic Crashes by Driver BAC



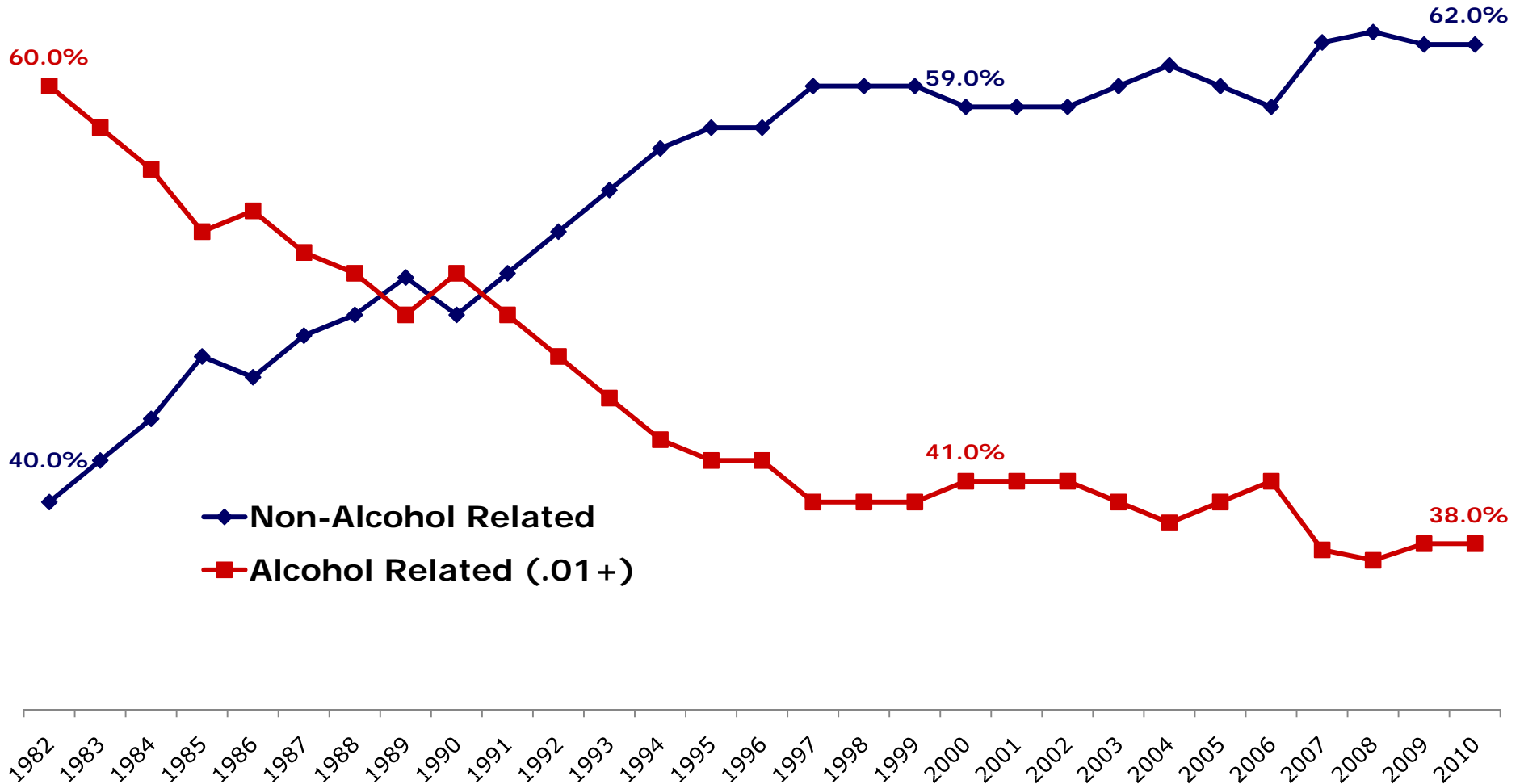
Source: National Highway Traffic Safety Administration, US Department of Transportation, 2010. Fatality Analysis Reporting System (FARS).

# U.S. Department of Transportation

## National Highway Traffic Safety Administration

### Crash Fatalities by Alcohol Involvement

#### *Fatalities by the Highest BAC in the Crash*



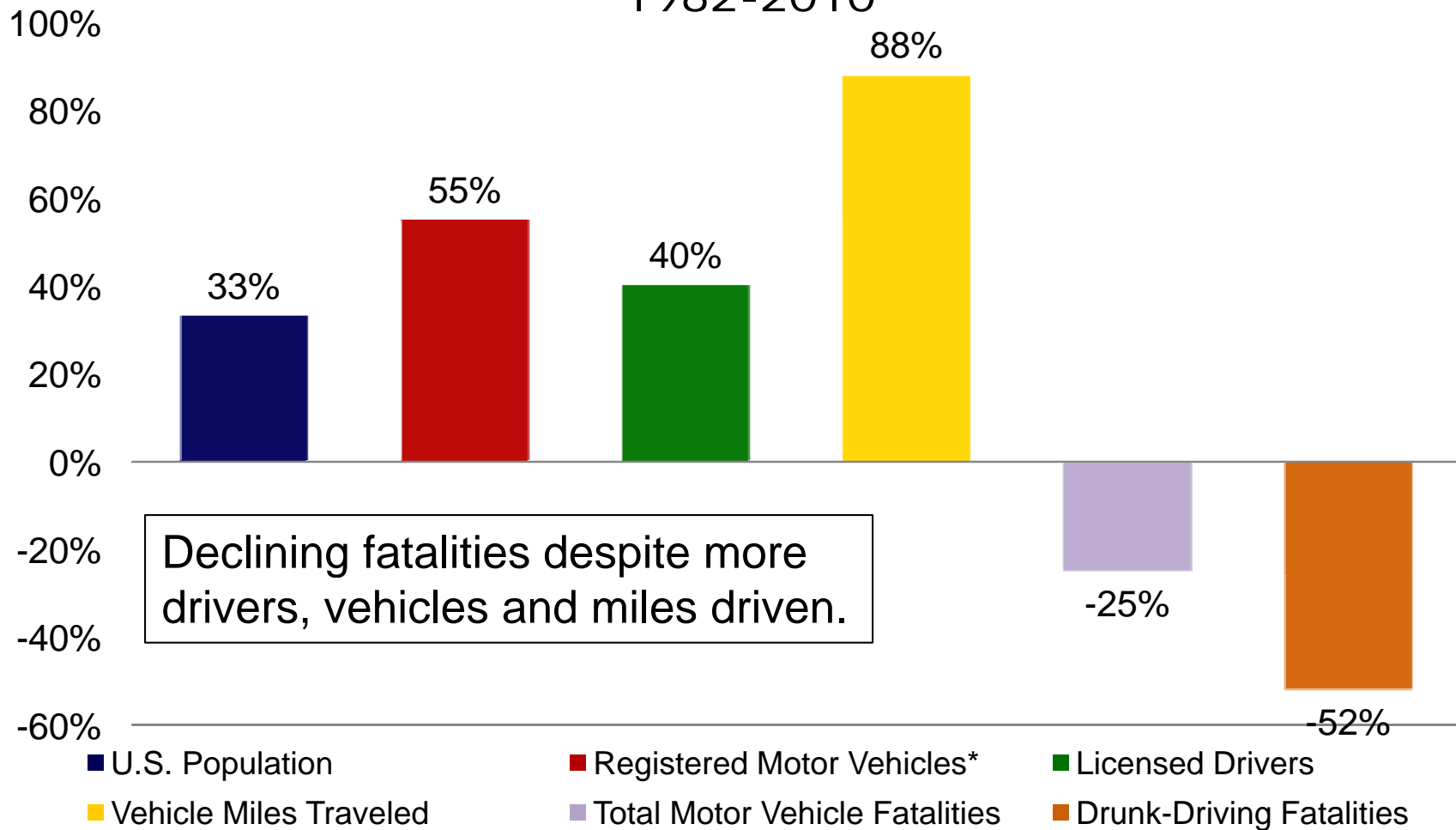
Source: U.S. Department of Transportation, National Highway Traffic Safety Administration, NHTSA defines a fatal crash as alcohol-related or alcohol-involved if at least one driver, motorcycle operator or nonoccupant (such as pedestrians, pedacyclists, occupants of parked motor vehicles, joggers, skateboard riders, people riding on animals, and persons riding animal-drawn conveyances) involved in the crash is determined to have had a BAC of .01 or higher.

# U.S. Department of Transportation

## National Highway Traffic Safety Administration

### U.S. Population, Licensed Drivers, Registered Motor Vehicles, Miles Traveled, Drunk-Driving Fatalities and Total Fatalities

1982-2010



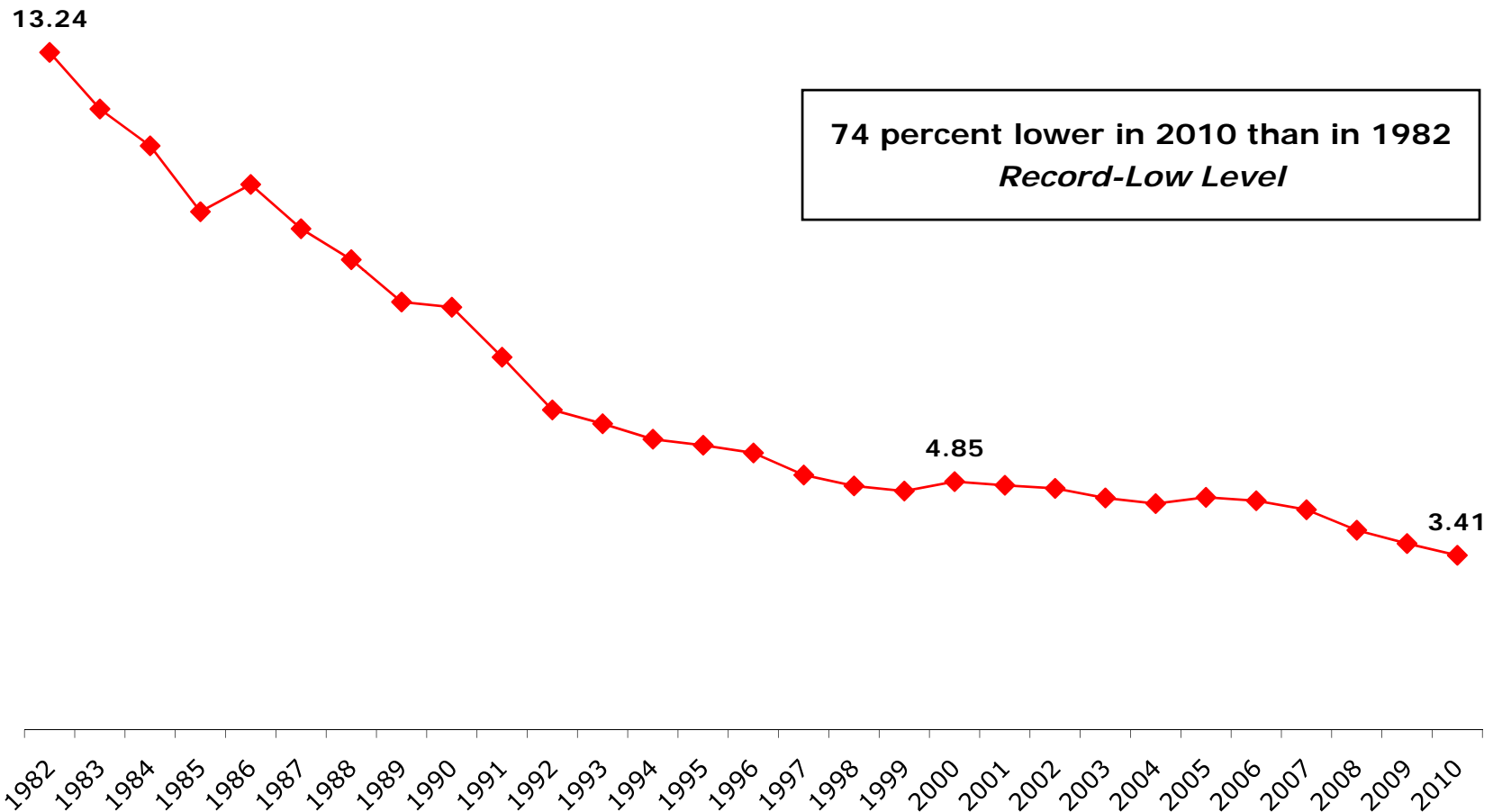
Sources: U.S. Department of Transportation, Federal Highway Administration Annual Highway Statistics and the U.S. Census Bureau. Drunk-driving fatalities represent the total number of fatalities (occupants and nonoccupants) in motor vehicle traffic crashes involving a driver or motorcycle rider with a blood alcohol concentration of .08 or higher.

\*2009 data, 2010 not yet released

# U.S. Department of Transportation

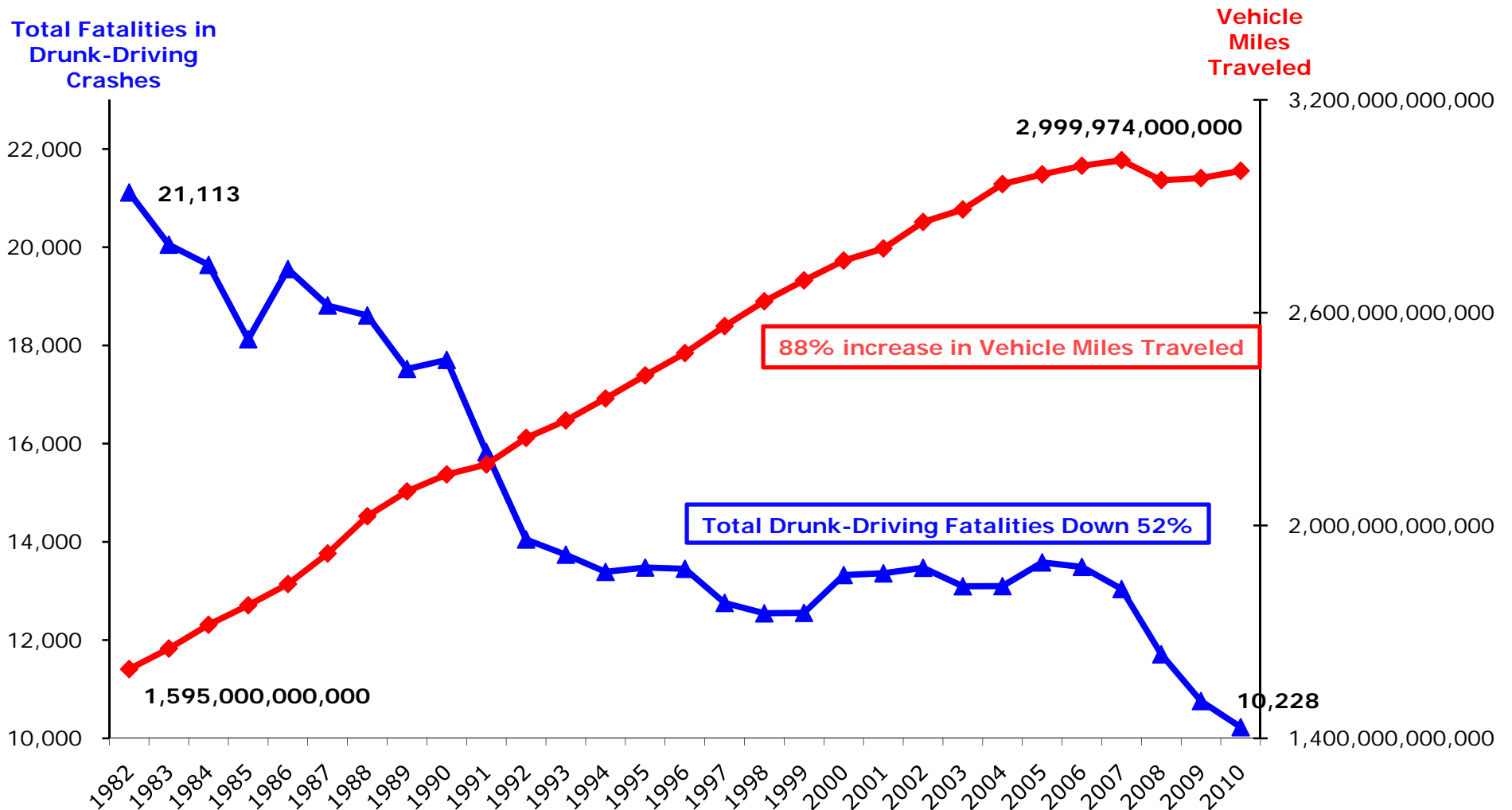
## National Highway Traffic Safety Administration

### Total Drunk-Driving Fatalities Per Billion Vehicle Miles Traveled



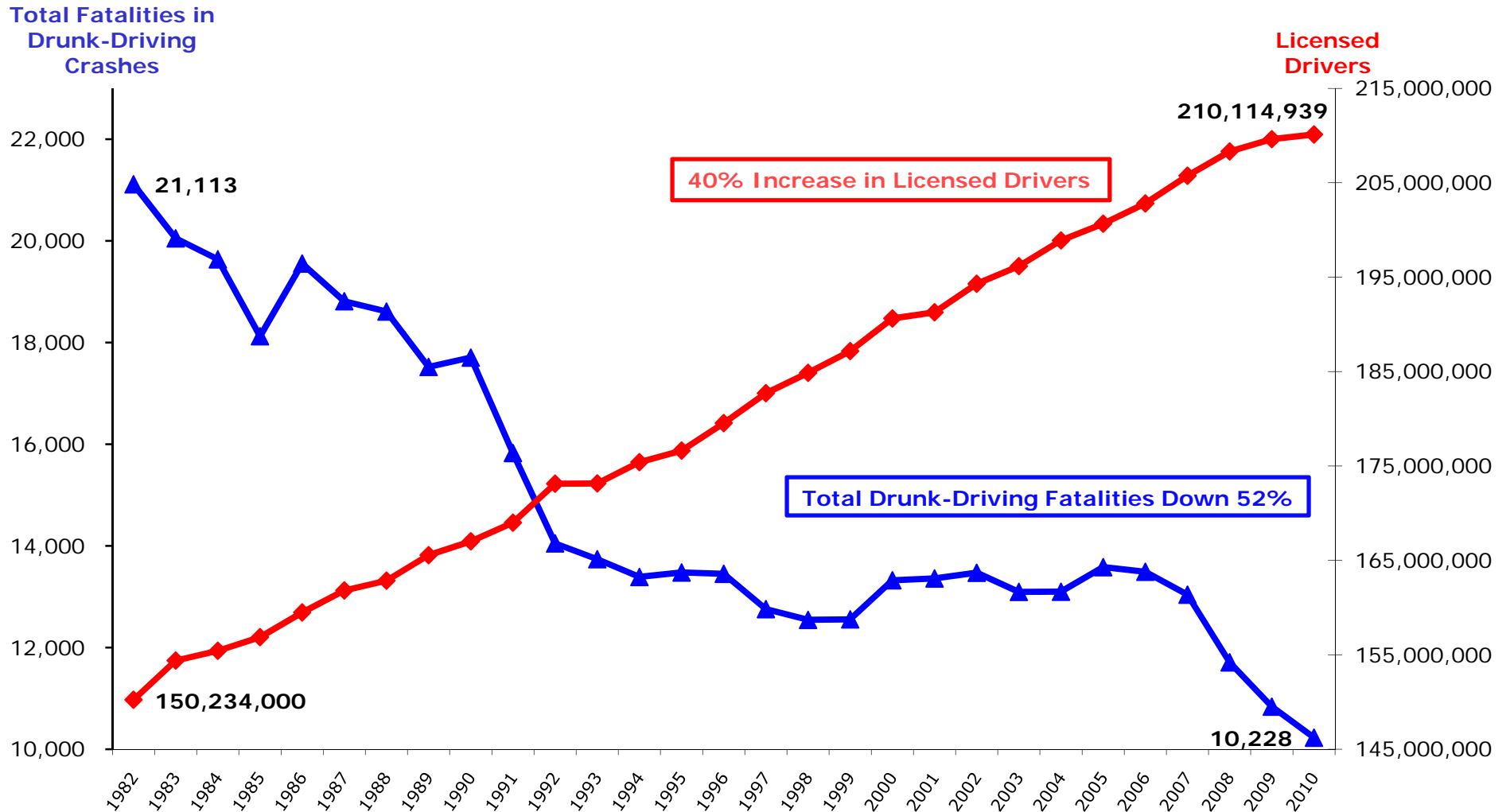
Source: U.S. Department of Transportation, National Highway Traffic Safety Administration. Federal Highway Administration Annual Highway Statistics; Drunk-driving fatalities represent the total number of fatalities (occupants and nonoccupants) in motor vehicle traffic crashes involving a driver or motorcycle rider with a blood alcohol concentration of .08 or higher. <http://www-nrd.nhtsa.dot.gov/Pubs/811552.pdf> ; <http://www.fhwa.dot.gov/policyinformation/statistics/2010/dl22.cfm>

# U.S. Department of Transportation National Highway Traffic Safety Administration



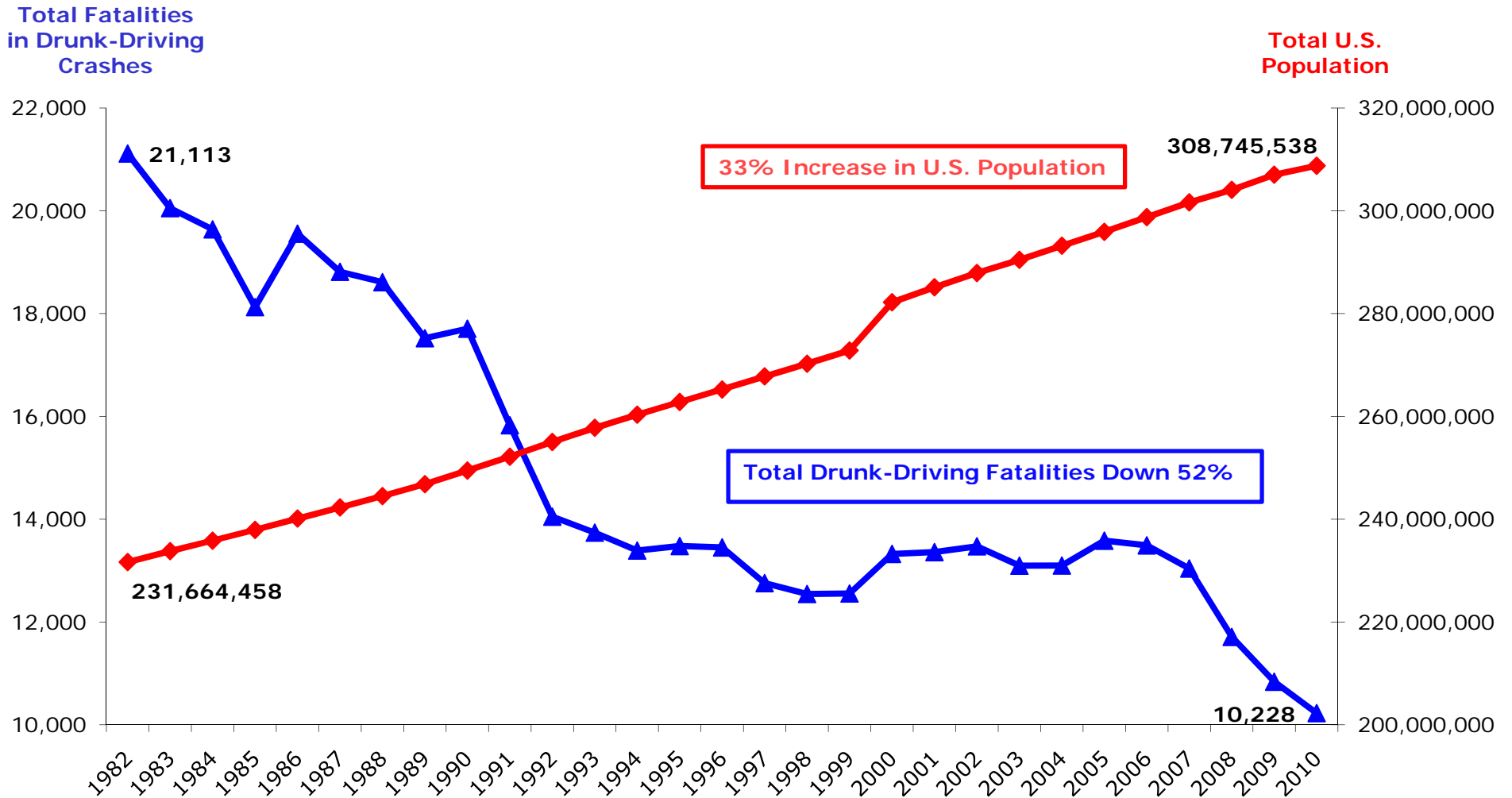
Source: U.S. Department of Transportation, National Highway Traffic Safety Administration. Federal Highway Administration Annual Highway Statistics; Drunk-driving fatalities represent the total number of fatalities (occupants and nonoccupants) in motor vehicle traffic crashes involving a driver or motorcycle rider with a blood alcohol concentration of .08 or higher. <http://www-nrd.nhtsa.dot.gov/Pubs/811552.pdf>; <http://www.fhwa.dot.gov/policyinformation/statistics/2010/dl22.cfm> ; [http://www.fhwa.dot.gov/policyinformation/statistics/vm03\\_summary.cfm](http://www.fhwa.dot.gov/policyinformation/statistics/vm03_summary.cfm) ;

# U.S. Department of Transportation National Highway Traffic Safety Administration



Source: U.S. Department of Transportation, National Highway Traffic Safety Administration. Federal Highway Administration Annual Highway Statistics; Drunk-driving fatalities represent the total number of fatalities (occupants and nonoccupants) in motor vehicle traffic crashes involving a driver or motorcycle rider with a blood alcohol concentration of .08 or higher. <http://www-nrd.nhtsa.dot.gov/Pubs/811552.pdf>; <http://www.fhwa.dot.gov/policyinformation/statistics/2010/dl22.cfm>; [http://www.fhwa.dot.gov/policyinformation/statistics/vm03\\_summary.cfm](http://www.fhwa.dot.gov/policyinformation/statistics/vm03_summary.cfm);

# U.S. Department of Transportation National Highway Traffic Safety Administration



Source: U.S. Department of Transportation, National Highway Traffic Safety Administration; Drunk-driving fatalities represent the total number of fatalities (occupants and nonoccupants) in motor vehicle traffic crashes involving a driver or motorcycle rider with a blood alcohol concentration of .08 or higher. <http://www.nrd.nhtsa.dot.gov/Pubs/811172.pdf>  
 Source: U.S. Census Bureau, Intercensal population estimates 1980-1989 <http://www.census.gov/popest/archives/1980s/st8090ts.txt>; 1990-1999, [http://www.census.gov/popest/archives/2000s/vintage\\_2001/CO-EST2001-12/](http://www.census.gov/popest/archives/2000s/vintage_2001/CO-EST2001-12/); 2000-2006, <http://www.census.gov/popest/states/NST-ann-est.html>; 2007, [http://factfinder.census.gov/servlet/DTable?\\_bm=y&-geo\\_id=01000US&-ds\\_name=PEP\\_2007\\_EST&-lang=en&-mt\\_name=PEP\\_2007\\_EST\\_G2007\\_T001&-format=&-CONTEXT=dt](http://factfinder.census.gov/servlet/DTable?_bm=y&-geo_id=01000US&-ds_name=PEP_2007_EST&-lang=en&-mt_name=PEP_2007_EST_G2007_T001&-format=&-CONTEXT=dt); 2008, <http://www.census.gov/popest/states/NST-ann-est.html>; 2009-2010 <http://2010.census.gov/2010census/popmap/>